



This message about...


**G**ROUND  
**F**AULT  
**C**IRCUIT  
**I**NTERRUPTERS

...can save a life!

**IF YOU MUST USE YOUR HAIR DRYER IN THE BATHROOM, INSTALL A GFCI\* NOW!**

Your local electrician can help you decide which type is best for you – a portable unit that plugs into the electrical outlet or a permanent unit installed by your electrician. The National Electrical Code now requires GFCIs in the bathrooms, garages, and outdoor outlets of all new homes.

**WHY DO YOU NEED A GFCI?** Electricity and water don't mix. If your hair dryer falls in water while it's plugged in, the electric shock can kill you... **even if the switch is off.** A regular fuse or circuit breaker won't protect you under these circumstances. A GFCI offers you far greater protection.



**A GFCI can save your life! Compared to that, the price is small! Don't wait... install one now!**

\*A GFCI is a sensitive device that reacts immediately to a small electric current leak by stopping the electricity flow.

## USER MAINTENANCE

Your dryer is virtually maintenance free. No lubrication is needed. For proper operating performance, the dryer must be kept clean.

When cleaning is needed, unplug the cord, allow to cool and clean dust and lint from air intake openings with a small brush or the brush attachment of a vacuum cleaner. The outer surface of the dryer should be wiped clean with a cloth only.

**Blocked or clogged air intake vents will cause the dryer to overheat.** If overheating occurs, an automatic safety device will shut the dryer or the heat off to prevent damage or personal injury. If the unit or the heat turns off, unplug the cord and allow the dryer to cool for 10 to 15 minutes before restarting. Make sure the air vents are clean.

### CAUTION

NEVER allow the power supply cord to be pulled, twisted, or severely bent. Never wrap the cord tightly around the dryer. Damage will occur at the high flex point of entry into the dryer, causing it to rupture and short circuit. Inspect the cord frequently for damage. **Stop use immediately if damage is visible or unit stops or operates intermittently.**

If the cord or dryer is damaged or does not operate properly, return it for repair to an authorized Conair service representative only. No repairs should be attempted by the consumer.

### STORAGE — IMPORTANT

When not in use, your dryer should be disconnected, allowed to cool and stored in a safe, dry location, out of reach of children. **Do not wrap line cord around dryer.**

## LIMITED TWO YEAR WARRANTY (U.S. AND CANADA ONLY)

Conair will repair or replace (at our option) your unit free of charge for 24-months from the date of purchase if the appliance is defective in workmanship or materials.

To obtain service under this warranty, return the defective product to the service centre listed below, together with your purchase receipt.

In the absence of a purchase receipt, the warranty period shall be 24 months from the date of manufacture.

**ANY IMPLIED WARRANTIES, OBLIGATIONS, OR LIABILITIES, INCLUDING BUT NOT LIMITED TO THE IMPLIED WARRANTY OF MERCHANTABILITY AND FITNESS FOR A PARTICULAR PURPOSE, SHALL BE LIMITED IN DURATION TO THE 24-MONTH DURATION OF THIS WRITTEN, LIMITED WARRANTY.**

**IN NO EVENT SHALL CONAIR BE LIABLE FOR ANY SPECIAL, INCIDENTAL, OR CONSEQUENTIAL DAMAGES FOR BREACH OF THIS OR ANY OTHER WARRANTY, EXPRESS OR IMPLIED, WHATSOEVER.**

This warranty gives you specific legal rights, and you may also have other rights, which vary from province to province.

## OPERATING INSTRUCTIONS

This appliance is intended for household use only. Use on Alternating Current (60 hertz) only. Standard dryers are designed to operate at 110 to 125 volts AC.

This appliance has a polarized plug (one blade is wider than the other). As a safety feature, this plug will fit in a polarized outlet only one way. If the plug does not fit fully in the outlet, reverse the plug. If it still does not fit, contact a qualified electrician. Do not attempt to defeat this safety feature.

## IMPORTANT 1875 WATT OPERATING GUIDE

Use of this dryer on the same circuit or fuse with other electrical products or appliances may trip a 15 amp circuit breaker or blow a 15 amp fuse. **NEVER replace the fuse with one rated higher than the capacity of the circuit. Doing so could result in an electrical fire.**

### DRYING BASICS

- Shampoo and condition hair with products of your choice. Rinse thoroughly. Towel-dry hair to remove excess moisture. Using the dryer along with your styling brush, start at a lower setting and direct hot air through a section of hair at a time. Move dryer steadily across each section so that the hot air passes through hair. Direct airflow at hair, not scalp. Clouds of negatively charged ions will help to reduce static electricity, control frizzy flyaways and contribute to your hair's shine.
- Keep dryer's air intake vents unobstructed and free from hair while drying.
- To avoid over-drying, do not concentrate heat on any one section for any length of time. Keep dryer moving as you style.
- For quick touch-ups between shampoos, dampen hair with a mist of water before styling with the dryer.
- When using your dryer to create curls and waves, dry hair almost completely on a warmer temperature setting with the snap-on diffuser attachment, then finish styling with cool shot feature to close hair shaft and lock in style.
- Use snap-on/snap-off concentrator for more direct airflow and pinpoint styling.

### BODY & VOLUME

To create extra volume, turn head upside down while drying. Position the airflow toward the roots for maximum lift. When hair is dry, toss head back and brush hair into place.

### STRAIGHTENING

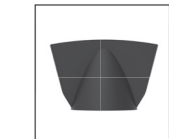
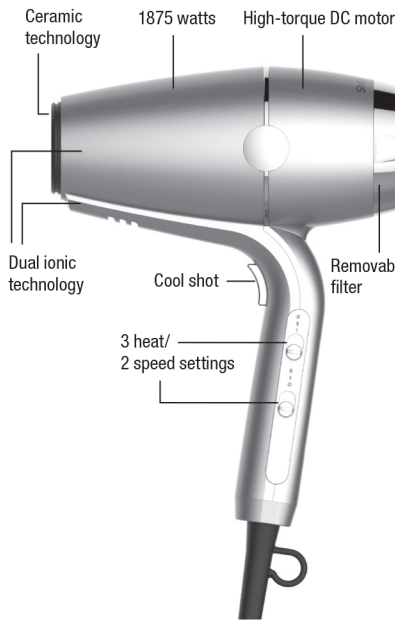
Work with hair in sections when creating a super-straight look. Use a large round brush (approximately 2" in diameter), to smooth out as you dry.

### MAKING WAVES

Tousled, natural-looking waves are easily created by grasping hair at the roots and scrunching between fingertips while drying. For curlier, wavier hair, use the diffuser attachment.



### GETTING TO KNOW YOUR DRYER



Concentrator



Diffuser

Powered by

INFINITI PRO CONAIR

## SMOOTHWRAP™

Smooth. Balanced. Healthy Looking.™  
A New Styling Experience.

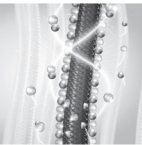
{ HAIR DRYER }



**Have a Question?**  
*Please do not return this product to the retailer.*  
**Call Us First!**

**Our customer service and product experts are ready to answer ALL your questions.**  
**Please call our TOLL-FREE customer service number at: 1-855-926-6247 or visit us online at [www.conaircanada.ca](http://www.conaircanada.ca)**

Instruction & Styling Guide  
Model 910C



**DUAL IONIC TECHNOLOGY** uses positive and negative conditioning ions to create the perfect balance for your hair, reducing frizz and maintaining body. The SmoothWrap™

maximizes the absorption of the conditioning ions to leave your hair feeling moisturized and conditioned.

**POWERFUL HIGH-TORQUE MOTOR** increases the velocity at which air moves through the dryer and into your hair, helping you dry and style your hair faster.

**CERAMIC TECHNOLOGY** is full spectrum, infrared heat that works on hair molecules to dry them inside and out. This fast and easy drying process helps minimize heat damage and makes hair less frizzy and more manageable.

select your setting	
speed/temp.	hair type
low(I)/cool(I)	delicate, thin, or easy-to-style hair
low(II)/warm(II)	average to thick or treated hair
high(III)/hot(III)	thick, coarse or hard-to-style hair
cool shot	sets style in place for all hair types